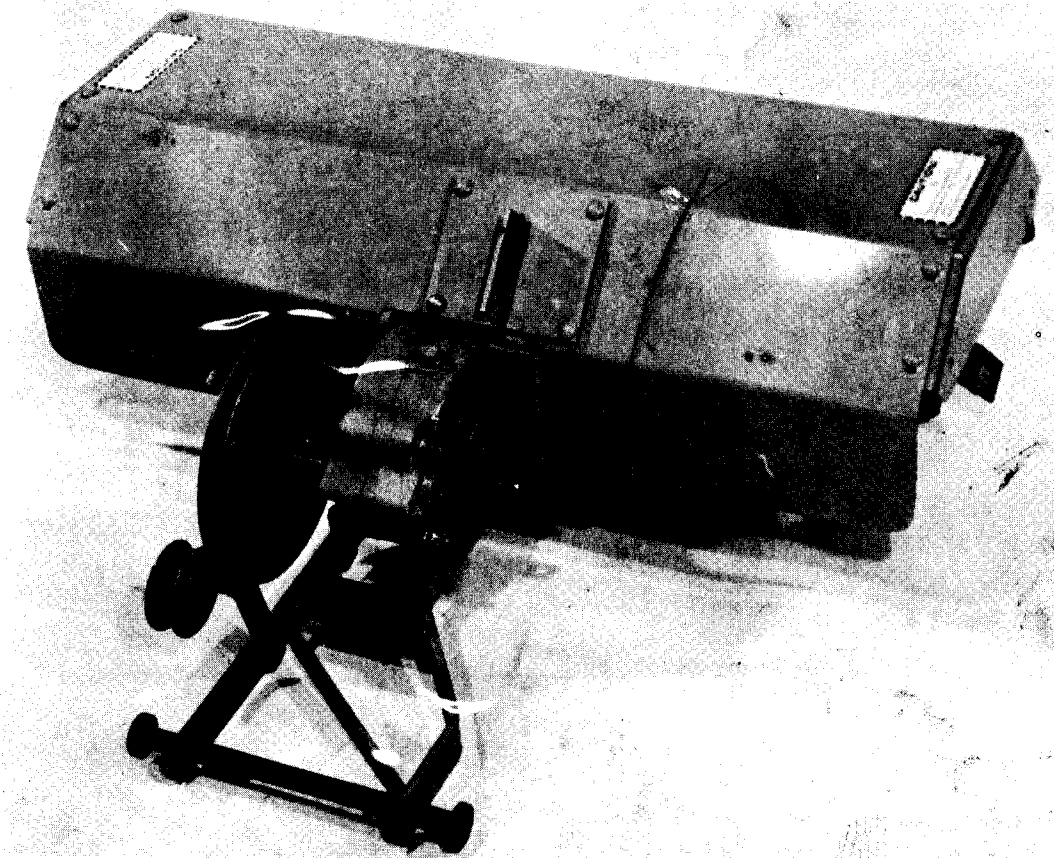


PARTS LIST AND INSTRUCTIONS



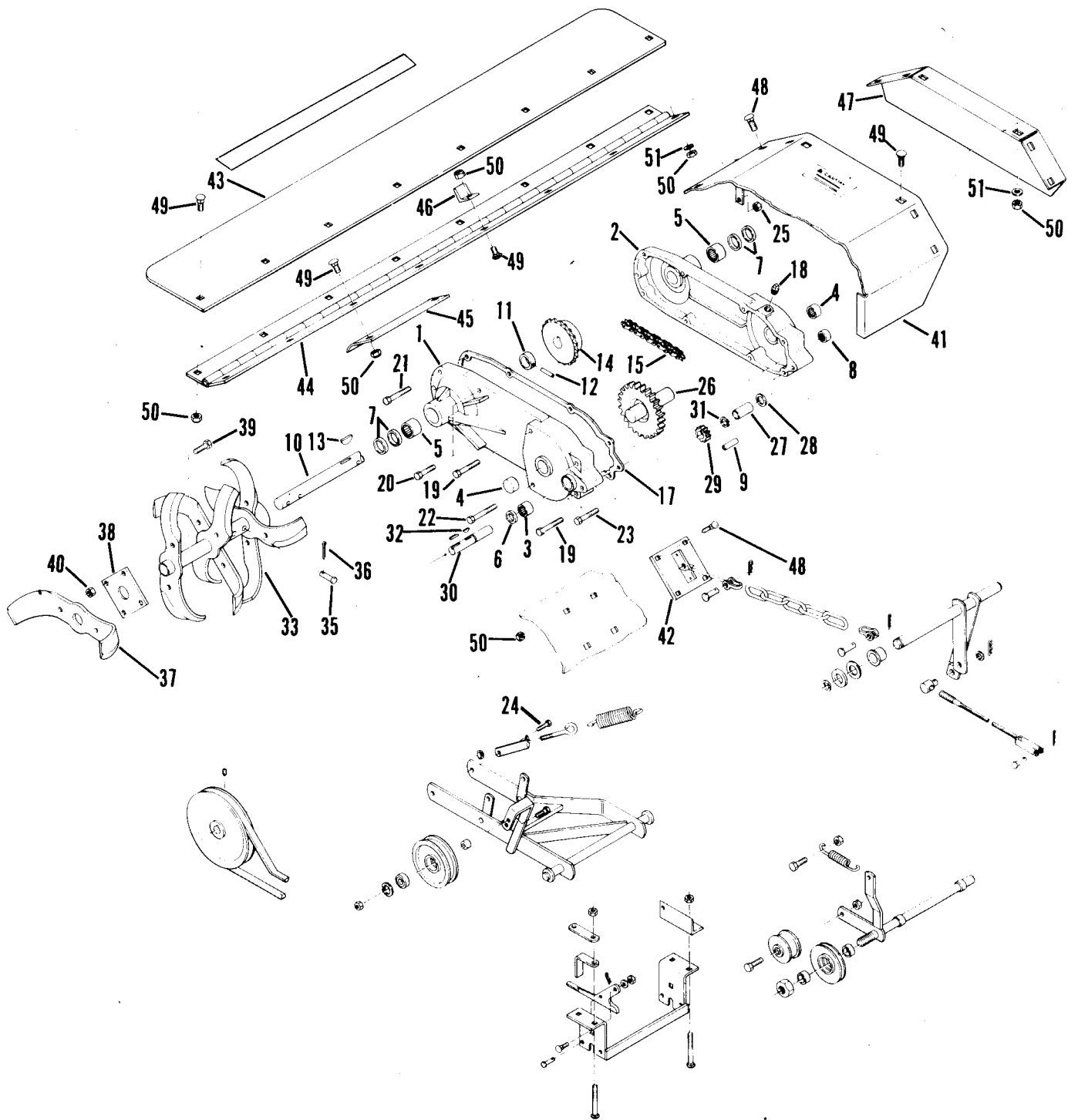
36" TILLER



WHEEL HORSE
lawn & garden tractors

77-36TL01

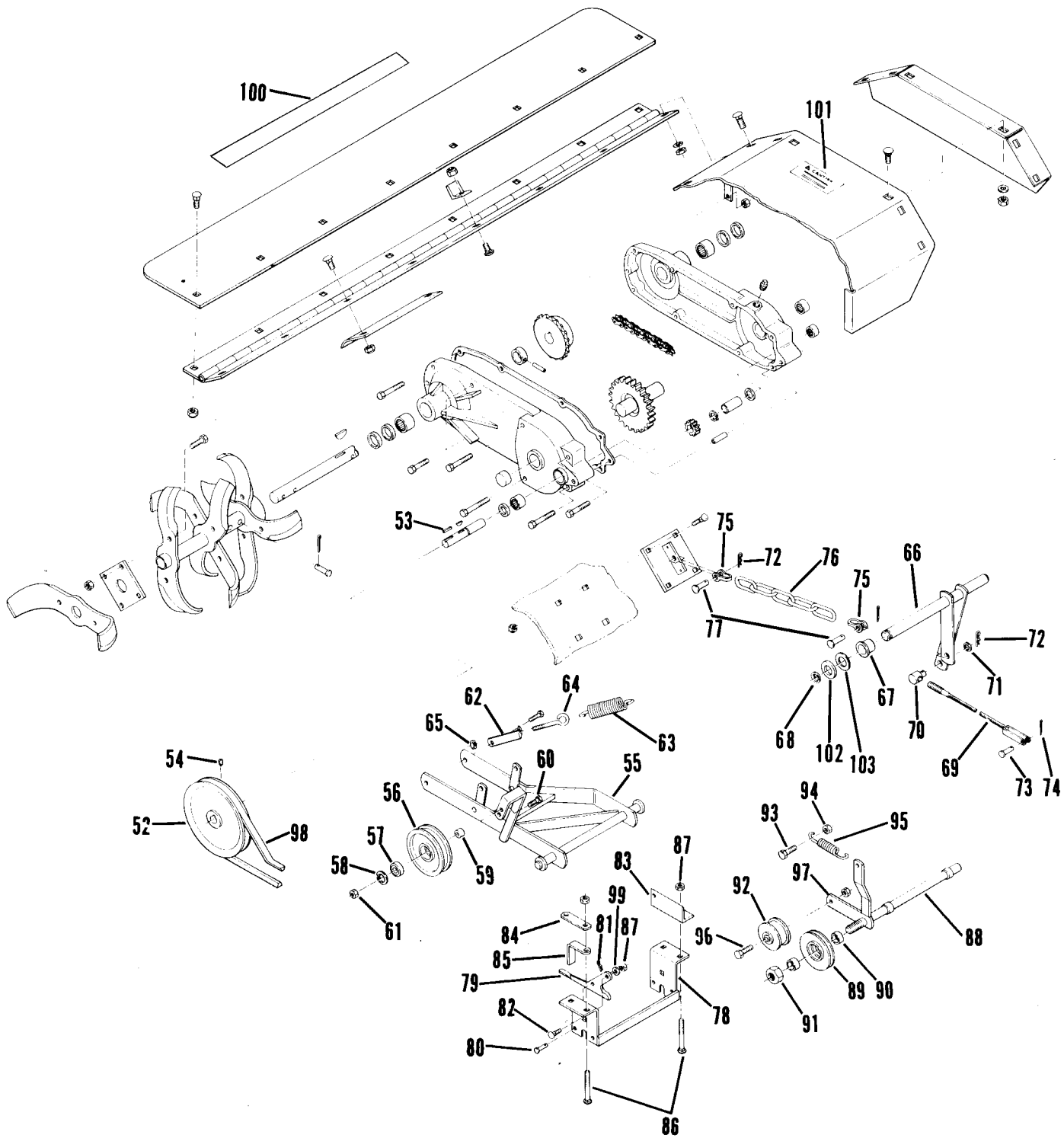
Price \$1.00



**PARTS LIST FOR 36" TILLER
FACTORY ORDER NUMBER 77-36TL01**

Parts available only through Authorized Dealers.
When ordering parts always list Part No. and Description.
(Specifications subject to change without notice.)

ITEM NO.	PART NO.	DESCRIPTION	NO. REQ'D.
1	6836	R. H. Case (w/Bearings)	1
2	6839	L. H. Case (w/Bearings)	1
3	1540	Needle Bearing $\frac{3}{4}$ ID x $\frac{1}{2}$	1
4	1532	Needle Bearing 1 ID x $\frac{3}{4}$ Closed End	2
5	6838	Needle Beaeing $1\frac{1}{4}$ ID x 1	2
6	100441	Seal $\frac{3}{4}$ ID	1
7	103118	Seal $1\frac{1}{4}$ ID	4
8	1529	Needle Bearing $\frac{3}{4}$ ID x $\frac{3}{4}$ Closed End	1
9	933242	Roll Pin $\frac{3}{8}$ x 1	2
10	6842	Tine Shaft	1
11	6843	Spacer	1
12	933232	Roll Pin $\frac{5}{16}$ x 2	1
13	937058	Woodruff Key #128	1
14	6845	Sprocket, 20 Teeth	1
15	6848	Chain, $\frac{3}{4}$ Pitch, 44 Pitches	1
17	6851	Gasket	1
18	943421	Pipe Plug, $\frac{1}{2}$ -14	2
19	908143	Hex Bolt $\frac{3}{8}$ -16 x 5	1
20	908041	Hex Bolt $\frac{3}{8}$ -16 x $2\frac{3}{4}$	3
21	908043	Hex Bolt $\frac{3}{8}$ -16 x $3\frac{1}{2}$	1
22	908144	Hex Bolt $\frac{3}{8}$ -16 x $4\frac{1}{2}$	1
23	908149	Hex Bolt $\frac{3}{8}$ -16 x $5\frac{1}{2}$	1
24	908044	Hex Bolt $\frac{3}{8}$ -16 x 4	1
25	915663	Elastic Stop Nut $\frac{3}{8}$ -16	8
26	6894	Reduction Gear Assy. (w/Shaft)	1
	6895	Reduction Gear	1
	6898	Shaft	1
27	6963	Spacer	1
28	1535	Thrust Washer	1
29	3528	Pinion Gear	1
30	104387	Input Shaft	1
31	936125	Snapping - $\frac{3}{4}$ Dia.	1
32	937014	Key #9 Woodruff	1
33	9204	R. H. Tine Assy.	1
	9205	L. H. Tine Assy.	1
35	9208	Tine Tube Clevis Pin	4
36	932017	Cotter Pin $\frac{1}{8}$ x 1	4
37	9206	R. H. Outside Tine	1
	9207	L. H. Outside Tine	1
38	9203	Outside Tine Mounting Plate	2
39	908046	Hex Bolt $\frac{7}{16}$ -14 x 1	8
40	915114	Eslok Nut $\frac{7}{16}$ -14	8
41	105546	Tiller Tine Shield	1
42	105549	Lift Plate	1
43	104437	Rear Shield	1
44	104438	Rear Shield Hinge	1
45	104436	Lower Rear Shield Stop	2
46	2595	Upper Rear Shield Stop	1
47	104434	Tiller End Cover	2
48	900037	Carriage Bolt $\frac{5}{16}$ -18 x $\frac{3}{4}$	6
49	900036	Carriage Bolt $\frac{5}{16}$ -18 x $\frac{5}{8}$	24
50	915112	Eslok Nut $\frac{5}{16}$ -18	30



**PARTS LIST FOR 36" TILLER
FACTORY ORDER NUMBER 77-36TL01**

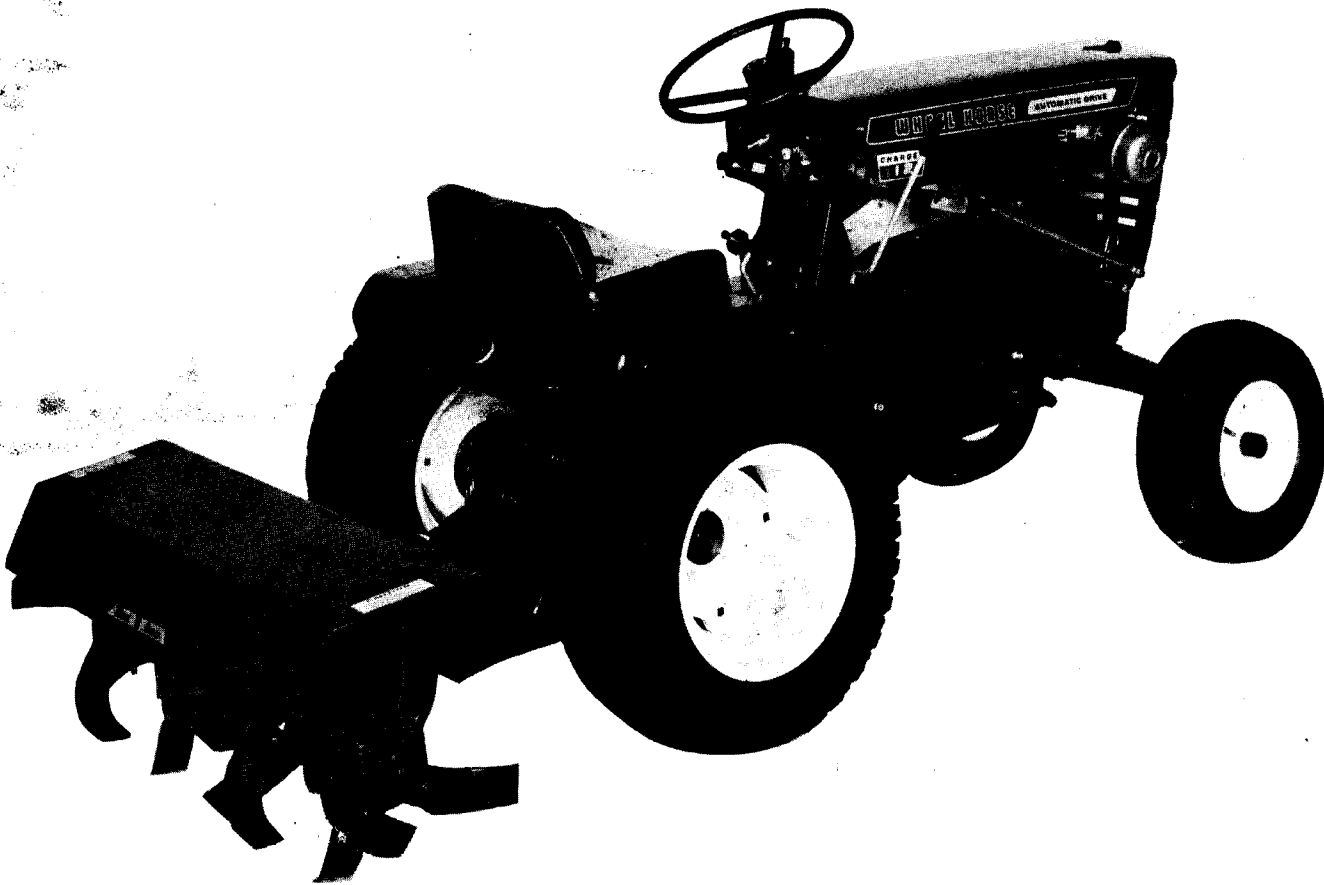
Parts available only through Authorized Dealers.
When ordering parts always list Part No. and Description.
(Specifications subject to change without notice.)

ITEM NO.	PART NO.	DESCRIPTION	NO. REQ'D.
51	920008	Washer $\frac{5}{16}$ SAE	12
52	6844	Pulley	1
53	1005	Square Key	1
54	7977	Set Screw $\frac{5}{16}$ -18 x $\frac{1}{2}$ Sq. Hd.	2
55	105543	Tiller Hitch	1
56	105874	Idler Pulley	1
57	4567	Bearing	1
58	936024	Snapping $1\frac{3}{8}$ Dia.	1
59	2138	Spacer	1
60	911404	Hex Bolt $\frac{3}{8}$ -16 x $1\frac{5}{8}$ Special	1
61	915113	Eslok Nut $\frac{3}{8}$ -16	1
62	104448	Spring Bracket	1
63	4629	Spring (Heavy)	1
64	100653	Eye Bolt	1
65	915663	E. S. Nut $\frac{3}{8}$ -16	1
66	105539	Lever Assy.	1
67	6254	Bushing	2
68	5618	E-Ring	2
69	105542	Lift Cable	1
70	104524	Trunnion	1
71	920009	Washer $\frac{3}{8}$ SAE	1
72	933504	Hairpin	3
73	932120	Clevis Pin	1
74	932000	Cotter Pin $\frac{1}{16}$ x $\frac{1}{2}$	1
75	105820	Clevis	2
76	105550	Lift Chain	1
77	105821	Clevis Pin	2
78	104659	Mounting Bracket	1
79	104657	Hitch Latch	2
80	932120	Clevis Pin	2
81	933504	Hairpin	2
82	900063	Carriage Bolt $\frac{3}{8}$ -16 x 1	2
83	104845	Link	1
84	3697	Link	1
85	7713	Axle Spacer	2
86	900073	Carriage Bolt $\frac{3}{8}$ -16 x $3\frac{1}{2}$	4
87	915113	Eslok Nut $\frac{3}{8}$ -16	5
88	104089	Mid Mount Idler Frame	1
89	104974	Idler Pulley	1
90	7038	Spacer	2
91	915640	E. S. Nut $\frac{3}{4}$ -16 Jam	1
92	MW8821	Flat Idler Pulley	1
93	908036	Hex Bolt $\frac{3}{8}$ -16 x $1\frac{1}{2}$	1
	908041	Hex Bolt $\frac{5}{16}$ -18 x 1	1
94	915113	Eslok Nut $\frac{3}{8}$ -16	3
95	6135	Idler Spring (Light)	1
96	960179	Whizlock Bolt $\frac{5}{16}$ -18 x 1	1
97	915112	Eslok Nut $\frac{5}{16}$ -18	1
98	1599	Drive Belt	1
99	920009	Washer - $\frac{3}{8}$ SAE	2
100	103174	Decal - Wheel Horse	1
101	105003	Decal - Caution	2
102	1278	.050" Shim Washer	2
103	5210	.015" Shim Washer	2

PARTS LIST AND INSTRUCTIONS



TILLER MODEL 7-1211



DESCRIPTION

The Model 7-1211 is designed to fit all Six Speed and Wheel-A-Matic tractors. It has 36" cut standard and a 30" cut optional by removing the outer tines.

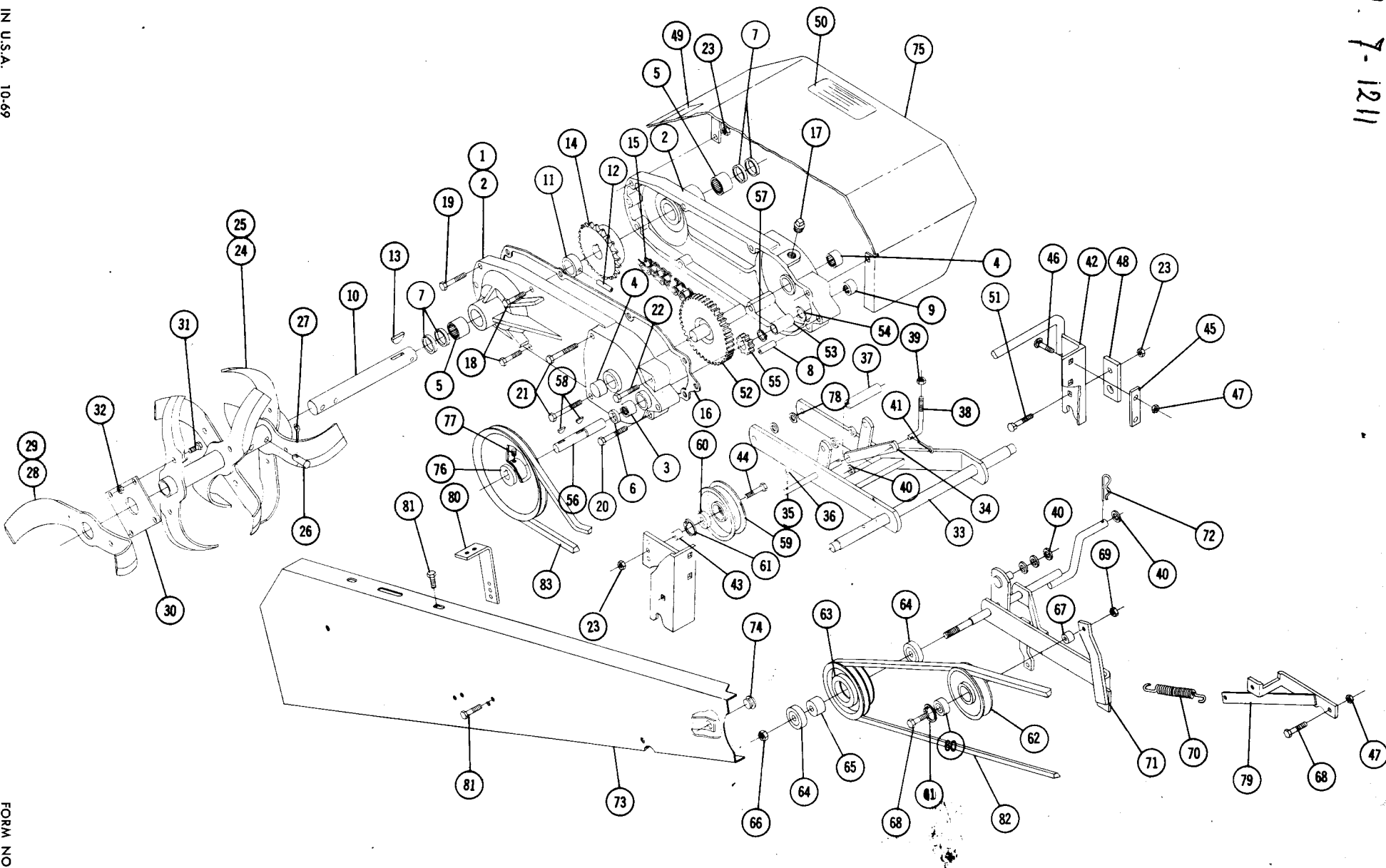
TILLER MOUNTING INSTRUCTIONS

It is recommended that rear wheel weights No. 8-1111 be used on all tractors. Tractors that have a 41 $\frac{1}{4}$ " wheel base (tractor models marked "X" on accessory chart) front wheel weights No. 8-1211 are also recommended.

The tiller is driven by an attachment clutch, if your tractor is not equipped with an attachment clutch, use the clutch shown on the accessory chart to fit your tractor model. Some tractors will need a new engine pulley and engine shaft key, see the chart for your tractor model. The front belt (Item No. 82 on the exploded view drawing) provided with the tiller, will fit most model tractors, all others take belt No. 1576. Check the chart for your model tractor.

WM Frees
Mod. 7-1211

LITHO IN U.S.A. 10-69



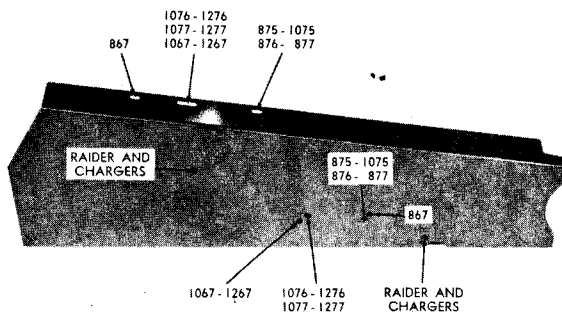


FIGURE X

In hard, compacted soils or clay it may be necessary to go slowly in order to obtain soil penetration. Better penetration can be obtained by removing the outer two tines which reduces the tilling width to 30 inches.

For best performance depending on ground cover it may be necessary to till area twice. One operation being 90° to the other if terrain permits or by overlapping.

WM Trees
mod 7-1211

PARTS LIST

When ordering parts always list Part No. and name of part.

Ref. No.	Part No.	Description	No. Req'd.
1	6835	Ass'y Gear Case — Complete	1
2	6837	Case R.H.	2
3	1540	Bearing Needle 3/4 I.D. 1/2	1
4	1532	Bearing Needle 1" I.D. x 3/4	2
5	6838	Bearing Needle 1 1/4 I.D. x 1	2
6	1303	Seal 3/4 I.D.	1
7	1482	Seal 1 1/4 I.D.	4
8	933242	Roll Pin 3/8 x 1	2
9	1529	Bearing Needle 3/4 I.D. x 3/4	1
10	6842	Shaft Tine	1
11	6843	Spacer	1
12	933232	Roll Pin 5/16 x 2	1
13	937058	Key #128 Woodruff	1
14	6845	Sprocket 20T	1
15	6848	Chain 3/4 Pitch 44 Pitches	1
16	6851	Gasket	1
17	943421	Plug 1/2-14 Pipe	2
18	908040-4)	Bolt Hex 3/8-16 x 2 1/2	3
19	908042-4	Bolt Hex 3/8-16 x 3	1
20	908144-4	Bolt Hex 3/8-16 x 4 1/2	1
21	908143	Bolt Hex 3/8-16 x 5	2
22	908145-4	Bolt Hex 3/8-16 x 3 3/4	1
23	915663-4	Nut Elastic Stop 3/8-16	11
24	6852	Ass'y Tine R.H.	1
25	6853	Ass'y Tine L.H.	1
26	6854	Pin Clevis — Tine Tube	4
27	932017-4	Cotter Pin 1/8 x 1	4
28	6856	Tine R.H.	1
29	6857	Tine L.H.	1
30	6855	Plate — Tine Mounting	2
31	908046-4	Bolt Hex 3/8-14 x 1	8
32	915114-6	Nut Nylok 3/8-14	8
33	7340	Ass'y. Hitch	1
34	7344	Link — Lift	1
35	6865	Shaft	1
36	932009-4	Cotter Pin 3/32 x 1	2
37	7366	Spacer	1
38	6888	Rod — Lift	1
39	915115-6	Nut Nylok 1/2-13	1
40	920011-4	Washer 1/2 SAE	5
41	932017-4	Cotter Pin 1/8 x 1	1
42	7345	Ass'y Hitch Axle Mounting	1

When tilling in sod or gumbo soils the tiller will have a tendency to push the tractor. Wheel weights will help to counteract this. However, it may also be advisable to control the depth of soil penetration with the Height-A-Matic lift lever or with the hydraulic control attachment.

Do not over-till the soil or pulverize it. Soil tilled too finely will not absorb moisture. It will cause puddling and water run-off. In addition the soil will become compacted more readily.

MAINTENANCE

The gear case is filled with oil at the factory and should not require filling. However, the oil level should be checked before using tiller and periodically afterwards. To check oil level the tiller should be on the tractor with the tines touching the ground. Remove the pipe plug on the bottom of the gear case. If oil runs from this hole then the oil is at its proper level. General purpose transmission type SAE 90 weight oil is used. When storing the unit for a long period of time, smear a light coat of grease on the tines to prevent rust.

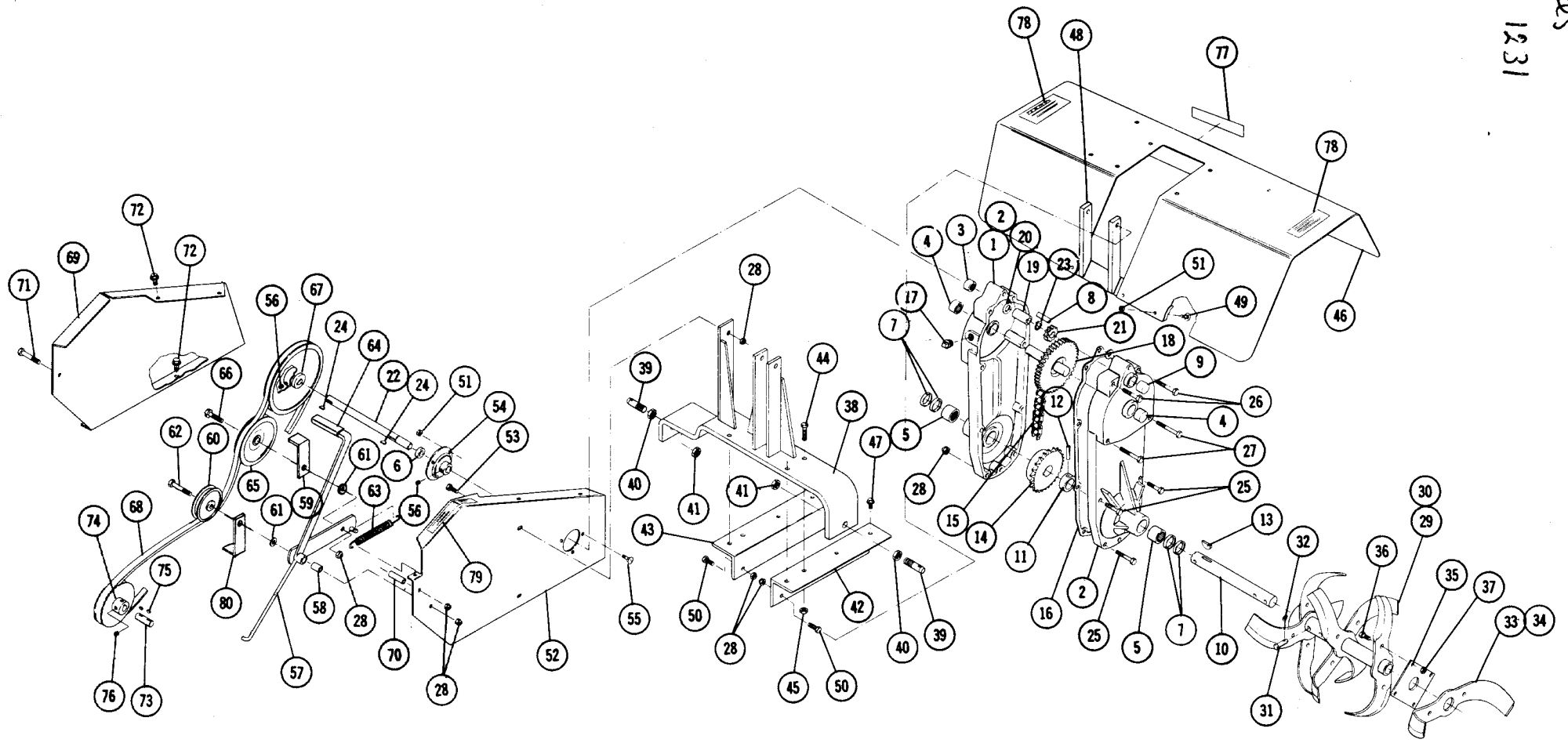
SPECIFICATIONS

WIDTH OF CUT: 36" standard, 30" optional by removing outer tines.
 ROTOR TINE DIAMETER: 13 1/2"
 OUTPUT SHAFT: 1 1/4" diameter heat-treated and ground shaft.
 MAXIMUM DEPTH OF CUT: 6" to 8".
 TOTAL REDUCTION FROM TRACTOR ENGINE TO OUTPUT SHAFT: 26.25 to 1 (Tine shaft RPM at full 3600 RPM engine speed: 137 R.P.M.).
 WEIGHT: 150 lbs.
 GEAR BOX LUBRICANT: SAE 90 gear lube, 1 1/2 pints.
 TINE ASSEMBLY: Right and left-hand assemblies, each with 6 one-piece, heat-treated tines. 12 cutting edges per side; 24 total cutting edges.

All specifications subject to change without notice.

Ref. No.	Part No.	Description	No. Req'd.
43	6814	Spacer	1
44	908038-4	Bolt 3/8-16 x 2	1
45	3697	Link	2
46	900072-4	Bolt Carriage 3/8-16 x 3 1/4	4
47	915113-6	Nut — Nylok 3/8-16	5
48	7913	Plate — Retaining	2
49	5415	Decal — Wheel Horse	1
50	4498	Decal — Caution	1
51	900064-4	Bolt Carriage 3/8-16 x 1 1/4	2
52	6894	Ass'y Gear — Reduction	1
53	6963	Spacer	1
54	1535	Washer — Thrust	1
55	3528	Gear — Pinion	1
56	6899	Shaft Input	1
57	936125	Snapring 3/4 Shaft External	1
58	937014	Key #9 Woodruff	2
59	6740	Pulley Flat	1
60	4567	Bearing Ball	2
61	936024	Snap Ring Internal	2
62	4974	Pulley Idler	1
63	7354	Pulley	1
64	6593	Bearing	2
65	7361	Spacer	1
66	915003-6	Nut Nylok 7/16-20	1
67	MW-2745	Spacer	1
68	908034-4	Bolt Hex 3/8-16 x 1	2
69	915236-4	Nut 3/8-16 Jam	1
70	6651	Spring	1
71	7697	Ass'y Idler Arm and Pivot	1
72	933512-4	Hairpin	1
73	7693	Ass'y Belt Guard	1
74	5667	Bumper — Rubber	1
75	6874	Ass'y. Tine Shield	1
76	6844	Pulley	1
77	7758	Set Screw 3/16-18 x 1/2 Nylok	1
78	920009-4	Washer 3/8 SAE	4
79	7244	Ass'y Bracket — Belt Guard	1
80	7260	Bar Belt Guard	1
81	960151-4	Bolt Whizlock 1/2-20 x 1/2	2
82	1586	"V" Belt	1
83	7358	"V" Belt	1

W H Trees
Mod 7-1231



- 4 -

LUBRICATION

The gear case is filled with oil at the factory and should not require filling. However, the oil level should be checked before using the tiller and periodically thereafter.

Check the oil level by removing the pipe plug at the rear of the gear case with the tiller in operating position. The correct oil level is one inch below the bottom edge of the hole. SAE 90 MP GL4-GL5 oil may be added as necessary. When storing the unit for an extended period of time, apply a light coat of grease to the tines to prevent rust.

DRIVE BELT REPLACEMENT

When replacing belts be sure to purchase genuine Wheel Horse belts, as these belts are specifically designed for each application.

1. With the tiller mounted on the tractor, hitch links properly adjusted and tiller tines resting on the ground, remove the right half of the belt guard.

2. Disengage the tiller clutch, remove the old belt, and install the new one in its place.

3. Engage the tiller clutch and check the settings of the two idler pulley belt guide brackets. See items marked 59 and 80 on the exploded view drawing.

The guide bracket at the front (flat) pulley should be centered between the points where the belt con-

tacts and leaves the pulley. To adjust, loosen the pulley center bolt and rotate the bracket as necessary to center it. Tighten the center bolt.

There should be approximately $\frac{3}{32}$ " clearance between the edge of the rear (Vee) pulley guide bracket and the belt strand leading to the tiller input pulley. To adjust, loosen the pulley center bolt and rotate the bracket rearward to decrease, forward to increase, the clearance. Tighten the center bolt.

4. Reinstall the right half of the belt guard.

SPECIFICATIONS

Width of cut: 36" standard. 30" optional by removing outer tines.

Rotor tine diameter: 13 $\frac{1}{2}$ ".

Tine shaft: 1 $\frac{1}{4}$ " diameter heat-treated and ground shaft.

Maximum depth of cut: 6" to 8".

Total reduction — tractor engine to tine shaft: 23:1.

Weight: 177 lbs.

Gear box lubricant: SAE 90 MP GL4-GL5 oil. Two quarts.

Tine assembly: Right and left-hand assemblies, each with 6 one-piece, heat-treated tines. 12 cutting edges per side; 24 total cutting edges.

PARTS LIST

When ordering parts always list Part No. and name of Part.

(Specifications subject to change without notice.)

Item No.	Part No.	Description	No. Req'd.	Item No.	Part No.	Description	No. Req'd.
1	9192	Gear Case -- Assembly Complete	1	41	915934-4	Nut Hex $\frac{5}{8}$ -11 Crown Lock	2
2	6837	Case	2	42	9030	Bar — Tiller Support R.H.	1
3	1540	Bearing Needle $\frac{3}{4}$ I.D. x $\frac{1}{2}$	1	43	9031	Bar — Tiller Support L.H.	1
4	1532	Bearing Needle 1" I.D. x $\frac{3}{4}$	2	44	908059-4	Bolt Hex $\frac{1}{2}$ -13 x 1 $\frac{1}{2}$	4
5	6838	Bearing Needle 1 $\frac{1}{4}$ I.D. x 1	2	45	915665-4	Nut Hex $\frac{1}{2}$ -13 Elastic Stop	4
6	1303	Seal $\frac{3}{4}$ I.D.	1	46	9022	Tiller Shield	1
7	1482	Seal 1 $\frac{1}{4}$ I.D.	4	47	960200-4	Bolt Whizlock $\frac{3}{8}$ -16 x $\frac{3}{8}$	4
8	933242	Roll Pin $\frac{3}{8}$ x 1	2	48	9023	Tine Shield Mounting Bracket	1
9	1529	Bearing $\frac{3}{4}$ I.D. x $\frac{3}{4}$	1	49	900084-4	Bolt Carriage $\frac{3}{16}$ -18 x 1	4
10	6842	Shaft — Tine	1	50	908035-4	Bolt Hex $\frac{3}{8}$ -16 x 1 $\frac{1}{4}$	2
11	6843	Spacer	1	51	915662-4	Nut Hex $\frac{3}{8}$ -18 Elastic Stop	7
12	933232	Roll Pin $\frac{5}{16}$ x 2	1	52	9148	Idler Support Plate	1
13	937058	Key #128 Woodruff	1	53	908034-4	Bolt Hex $\frac{3}{8}$ -16 x 1	2
14	6845	Sprocket 20T	1	54	5269	Bearing — Flanged Ball	1
15	6848	Chain $\frac{3}{4}$ Pitch 44 Pitches	1	55	900037-4	Bolt Carriage $\frac{3}{16}$ -18 x $\frac{3}{4}$	3
16	6851	Gasket	1	56	909862-5	Set Screw $\frac{3}{16}$ -18 x $\frac{3}{16}$	4
17	943421	Plug $\frac{1}{2}$ -14 Pipe	2	57	9032	Idler Arm	1
18	6894	Gear — Reduction	1	58	9035	Bushing — Spacer	1
19	6963	Spacer	1	59	9149	Bracket — Belt Guide	1
20	1535	Washer — Thrust	1	60	6719	Pulley — Flat Idler	1
21	3528	Gear Pinion	1	61	920039-4	Washer $\frac{3}{8}$ US	2
22	9034	Shaft Input	1	62	908042-4	Bolt Hex $\frac{3}{8}$ -16 x 3	1
23	936125	Snap Ring $\frac{3}{4}$ Shaft	1	63	6651	Spring Extension	1
24	937014	Key #9 Woodruff	2	64	7365	Grip — Clutch Arm	1
25	908040-4	Bolt Hex $\frac{3}{8}$ -16 x 2 $\frac{1}{2}$	4	65	7451	Pulley — Idler	1
26	908145-4	Bolt Hex $\frac{3}{8}$ -16 x 3 $\frac{3}{4}$	2	66	908037-4	Bolt Hex $\frac{3}{8}$ -16 x 1 $\frac{3}{4}$	1
27	908143	Bolt Hex $\frac{3}{8}$ -16 x 5	2	67	9150	Pulley — Driven	1
28	915663-4	Nut Hex $\frac{3}{8}$ -16 Elastic Stop	15	68	9151	"V" Belt — Drive	1
29	9204	Tine R.H.	1	69	9123	Guard — Belt	1
30	9205	Tine L.H.	1	70	9138	Spacer — Belt Guard	1
31	9208	Pin — Clevis — Tine Tube	4	71	908043-4	Bolt Hex $\frac{3}{8}$ -16 x 3 $\frac{1}{2}$	1
32	932017-4	Cotter Pin $\frac{1}{8}$ x 1	4	72	960175-4	Bolt Whizlock $\frac{3}{16}$ -18 x $\frac{1}{2}$	4
33	9206	Tine R.H.	1	73	9037	Shaft Tiller Stub	1
34	9207	Tine L.H.	1	74	9036	Pulley Drive Tiller	1
35	9203	Plate — Tine Mounting	2	75	937010	Key #6 Woodruff	2
36	908046-4	Bolt Hex $\frac{3}{8}$ -14 x 1	8	76	7977	Set Screw Square Head $\frac{5}{16}$ -18 x $\frac{1}{2}$	4
37	915114-6	Nut Nylak $\frac{3}{8}$ -14	8	77	5415	Decal — Wheel Horse	1
38	9026	Tiller Mast	1	78	4498	Decal — Caution	2
39	9025	Pin — Lower Link	2	79	9214	Decal — Clutch	1
40	915240-4	Nut Hex $\frac{5}{8}$ -11 Jam	2	80	9186	Bracket Belt Guide	1

HYDRAULIC HOSE LOCATION CHART

ARK PART NO.	LOCATION	NO. REQ'D.
23868	Right Tilt Cylinder, Front Hose	1
23868	Right Tilt Cylinder, Rear Hose	1
23837	Left Tilt Cylinder, Front Hose	1
23837	Left Tilt Cylinder, Rear Hose	1
23868	Right Lift Cylinder, Front Hose	1
230981	Right Lift Cylinder, Rear Hose	1
23837	Left Lift Cylinder, Front Hose	1
230982	Left Lift Cylinder, Rear Hose	1
23881	Valve Ports to Metal Lines	4
23889	Return Hose, Valve to Reservoir	1
23874	Suction Hose, Pump to Reservoir	1
230980	Pressure Hose, Pump to Valve	1

HYDRAULIC ADAPTER LOCATION AND DESCRIPTION CHART

ARK PART NO.	DESCRIPTION — LOCATION	NO. REQ'D.
23907	Male SAE O-Ring to Male JIC 90°, Pump	1
23908	Tee-Male JIC, Connector to Hydraulic Lines	4
23909	Male SAE O-Ring to Female Swivel 90°, Pump Inlet Side	1
23910	Male Pipe to Male JIC 90°, Hydraulic Cylinders and Reservoir	9
230923	Male SAE O-Ring to Male JIC Straight, Valve	2
23904	Male Pipe to Female Swivel 45°	1

MOUNTING HARDWARE (obtain locally)

SIZE AND DESCRIPTION	NO. REQ'D.
3/16 x 1 1/2 Clinch Pin	12
3/16 x 2 Cotter Pin	1
1/4 x 1/2 Stove Bolt	1
1/4-20 x 2 Hex Bolt	2
1/4-20 Nut	2
1/4 Lockwasher	2
5/16-18 Nut	3
5/16 Lockwasher	3
3/8-16 x 1 Hex Bolt, Grade 5	13
3/8-16 x 1 1/2 Hex Bolt, Grade 5	6
3/8-16 x 2 1/2 Hex Bolt, Grade 5	2
3/8-16 x 8 Hex Bolt, Grade 5	1
3/8-16 Nut	18
3/8 Lockwasher	22
3/8 Flatwasher	10
#3 Hairpin Cotter	6
1/2-13 x 1 Hex Bolt, Grade 5	1
1/2-13 x 1 1/2 Hex Bolt, Grade 5	8
1/2 x 2 1/2 Clevis Pin	2
1/2-13 Nut	8
1/2 Lockwasher	8
1/2 Flatwasher	4
7/16-14 x 1 1/4 Hex Bolt, Grade 5	1
7/16 Lockwasher	1
1/2-13 x 3 1/2 Hex Bolt, Grade 5	2

Setje voor cyl. FrontLader.

3 x O-ring 38 x 3,53

1 x O-ring 24,99 x 3,53

PARTS LIST FOR FRONT LOADER
VEHICLE IDENTIFICATION NUMBER 07-40FL01

All part numbers shown are Ark Manufacturing Co., Inc. part numbers.

Parts are available through authorized Wheel Horse dealers,
or from Ark Manufacturing.

(Specifications subject to change without notice.)

ITEM NO.	ARK PART NO.	DESCRIPTION	NO. REQ'D.
1	20037	Decal, Caution	1
2	21026	Lift & Tilt Cylinder	4
3	22001	Control Valve	1
4	22003	Handle Linkage	2
5	22021	Valve Handle (with Cover)	2
6	22016	Black Vinyl Cover	2
7	23001.1	Pump	1
8	23003	Pulley	1
9	23042	Hose Clamp	2
10	230917	Gates V-Belt 6827	1
11	230972	Hydraulic Metal Line — Arm	4
12	23705	Hydraulic Metal Line — Divider	4
13	230976	Pump Mounting Adjusting Bar	1
14	230975	Pump Mounting Support Plate	1
15	230974	Pump Mounting Bracket	1
16	230977-L	Left Hose Bracket (Front Mounting)	1
17	230977-R	Right Hose Bracket (Front Mounting)	1
18	230978	Hose Bracket (Underframe)	1
19	24027	Hydraulic Line Hold Down	3
20	24028	Hydraulic Line Bracket	3
21	24043	Grease Fitting	4
22	24044	Hydraulic Line Cushion	3
23	24985	Spacer/Bushing	2
24	24956	Boom Assembly	1
25	24957	Pivot Pins — Boom to Bucket & Boom to Uprights	4
26	24958	Cylinder Attaching Pin	6
27	24959	Cross Tie	1
28	24960	Guide Tube	1
29	24961	Guide Rod	1
30	24962	Tapped Pivot Pin	2
31	24963	Parking Stand	2
32	25009	Breather Cap	1
33	250981-L	Upright Assembly (Left)	1
34	250981-R	Upright Assembly (Right)	1
35	260931	Brace Arm	2
36	260932	Front Mounting Assembly	1
37	270980	Underframe Assembly	1
38	28729	Bucket Assembly	1
39	290329	Ballast Box	1
40	290318	Ballast Box Bracket	2
41	29011	Ballast Box Hitch	1
42	290333	Ballast Box Door	1